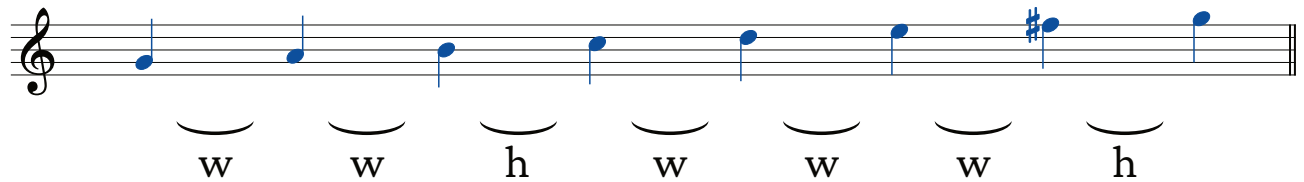


Example page

Write the scale, key signature, and scale notes

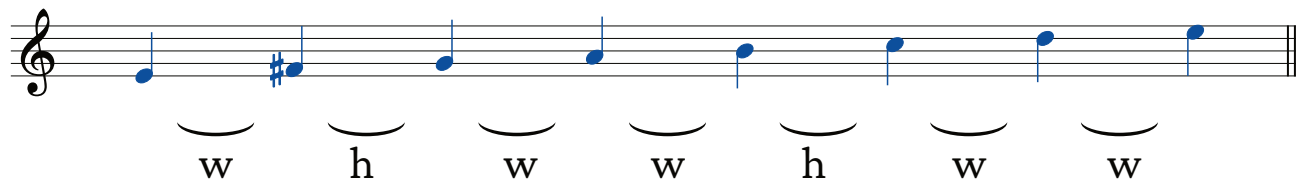
Major scale: G MAJOR

Notes: G A B C D E F# G



Relative minor scale: E MINOR

Notes: E F# G A B C D E



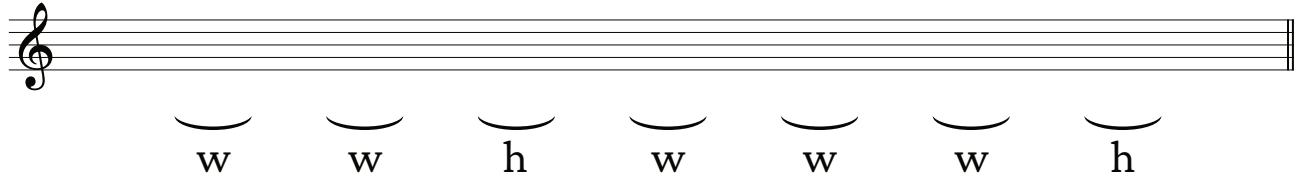
Fill in the scale notes (example)

A guitar fretboard diagram showing the G Major scale notes across frets 1, 3, 5, 7, 9, and 12. The notes are: 1st fret (F#, G), 3rd fret (A, B, C), 5th fret (D, E, F#, G), 7th fret (A, B, C), 9th fret (D, E, F#, G), 12th fret (A, B, C).

Write the scale, key signature, and scale notes

Major scale: _____

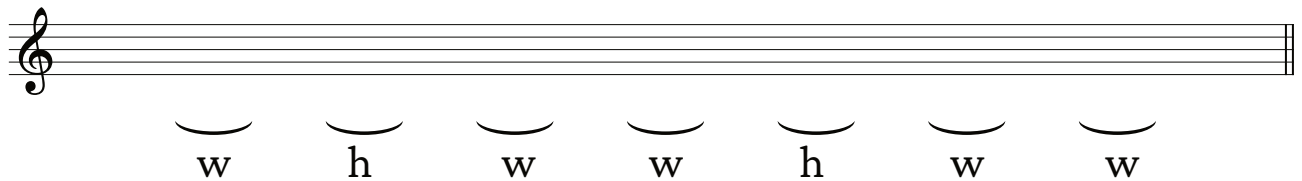
Notes: _____



A musical staff with a treble clef. Below the staff, seven pairs of brackets indicate fret positions: 'w' (whole) at 1st fret, 'w' at 2nd fret, 'h' (half) at 3rd fret, 'w' at 4th fret, 'w' at 5th fret, 'w' at 6th fret, and 'h' at 7th fret.

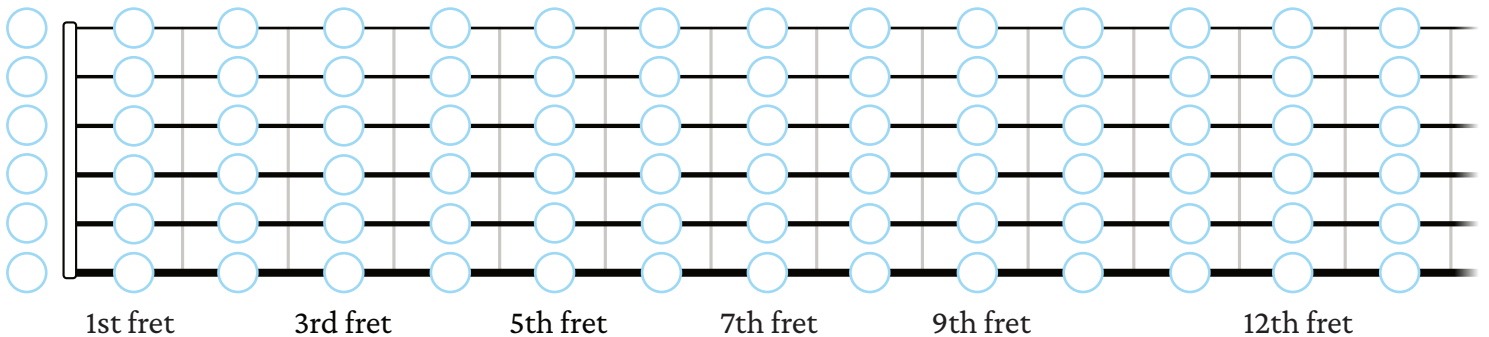
Relative minor scale: _____

Notes: _____



A musical staff with a treble clef. Below the staff, seven pairs of brackets indicate fret positions: 'w' at 1st fret, 'h' at 2nd fret, 'w' at 3rd fret, 'w' at 4th fret, 'h' at 5th fret, 'w' at 6th fret, and 'w' at 7th fret.

Fill in the scale notes



A fretboard diagram with six strings and 12 frets. The frets are labeled at the bottom: 1st fret, 3rd fret, 5th fret, 7th fret, 9th fret, and 12th fret. Each fret has a circle on each of the six strings, representing a note to be filled in.

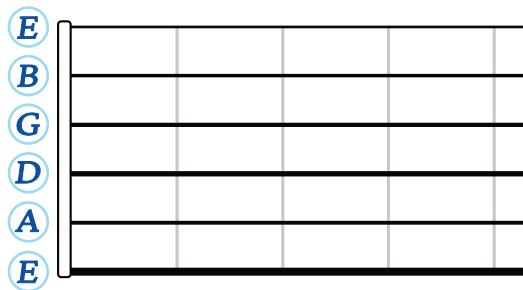
Reference page

Here are the steps between all the notes to help you fill out the scale charts. (Note that there are no sharps or flats between E to F and B to C).

All 12 consecutive notes (in half steps)

C	C# or Db	D	D# or Eb	E	F	F# or Gb	G	G# or Ab	A	A# or Bb	B	(C)
---	----------------	---	----------------	---	---	----------------	---	----------------	---	----------------	---	-----

String names review



Tip: A phrase to remember the open string names from lowest to highest: **Eat All Day Get Big Easy**

- [You can pick up the PDF for all the guitar notes here](#)
- [Don't know your scales? Get the scales charts here](#)